

2" Non-FR Wood Blinds

• **Headrail:** 1 5/8" high x 2 1/4" wide x .022" thick U-shaped steel with 1/8" light blocking lip on the bottom center line. The steel finishing process includes phosphate treatment for corrosion resistance, a chrome-free sealer, a low HAP urethane primer and a topcoat with low HAP polyester baked enamel.

• **Cord Tilter:** A snap-in component incorporating a worm and pulley of low friction thermoplastic and nylon gear. The tilt cords are secured to the pulley and treated with wood tassels at the tilt end. Cord tilter is standard.

• **Tilt Rod:** Electro-zinc coated solid steel measuring 1/4" square.

• **Cord Lock:** Made of a snap-in design incorporating a floating, shaft-type locking pin. Its crash proof safety feature will lock blind automatically upon release of cord.

• **Drums:** High strength thermoplastic, which securely anchors the braided ladder or cloth tapes.

• **Installation Brackets:** A rivet-hinged front cover phosphate-treated steel with urethane primer and polyester baked enamel finish to match the headrail.

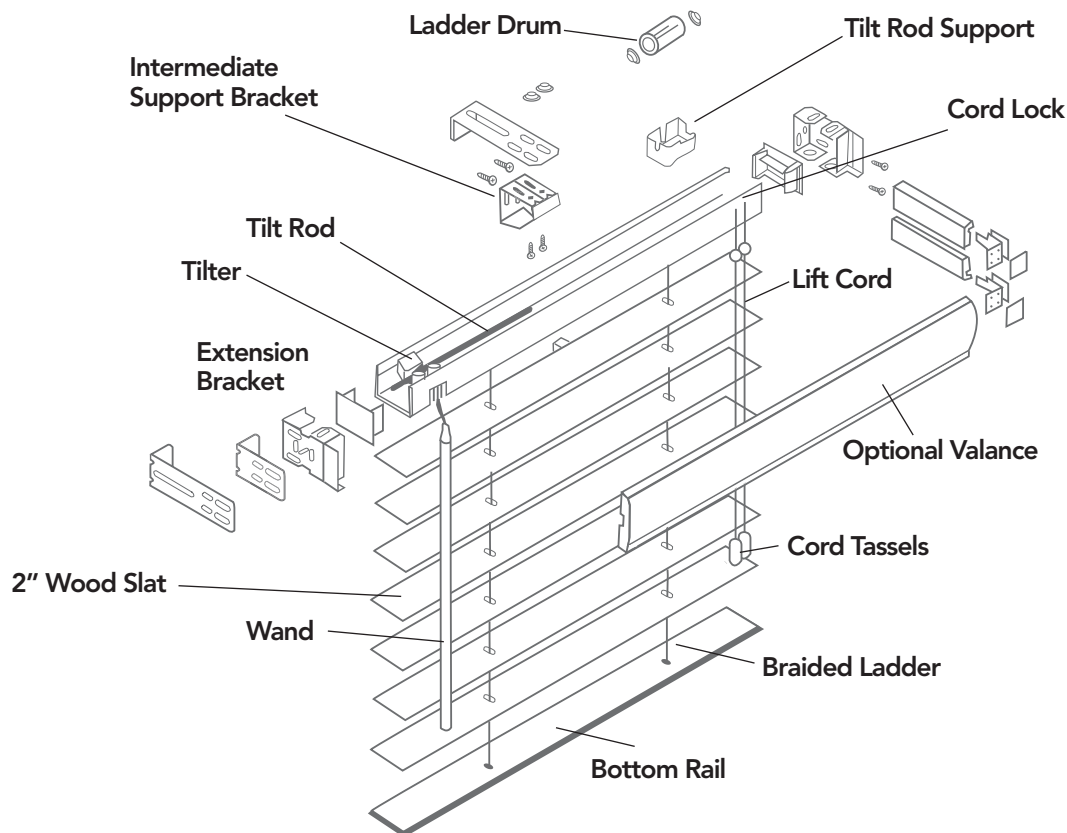
• **Braided Ladder:** 100% polyester incorporating two extra strength rungs per ladder to support slats. Standard ladder spacing is 44mm.

• **Slats:** North American hardwood and are resistant to warping. Slats shall be 2" wide x 1/8" thick.

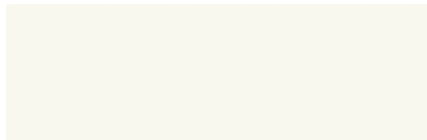
• **Bottomrail:** 5/8" high x 2" wide wood in a trapezoid shape to improve closure and finished to coordinate with slats.

• **Options include:**

- NoHoles™ slat
- Wand tilter
- Cloth tapes 1" or 1 1/2"
- Ring pull
- Ring tilter
- Extension brackets
- Hold down brackets



2" Traditions Painted Non-FR Wood Blinds



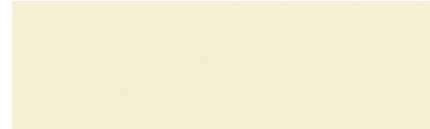
1063 Snowflake



1051 Base White



1712 Crisp White



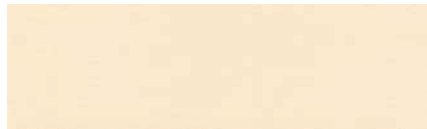
1683 Dover White



1052 Angora



1325 Ivory



1963 Stucco



1026 Antique White



1724 Almond

2" Traditions Stained Non-FR Wood Blinds



1515 Knotty Pine



1007 Natural



1688 Peru



1045 Tawny



1710 Wheat



1565 Sable

Actual colors may vary from images shown.

2" Traditions Stained Non-FR Wood Blinds cont.



1030 Golden Oak



1013 Honey Maple



1546 Cappuccino



1465 Cognac



1069 Bridgewood



1012 Walnut



1020 Light Pecan



1014 Cherry Wood



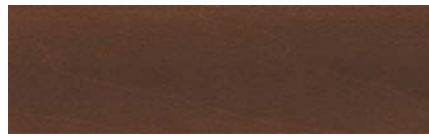
1685 Sienna



1056 Pinewood



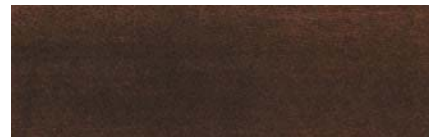
1694 Saddle Brown



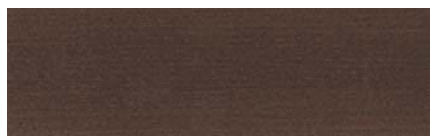
1641 Dark Walnut



1316 Dark Cherry



1759 Mocha



1054 Truffle



1716 Espresso



1690 Raven

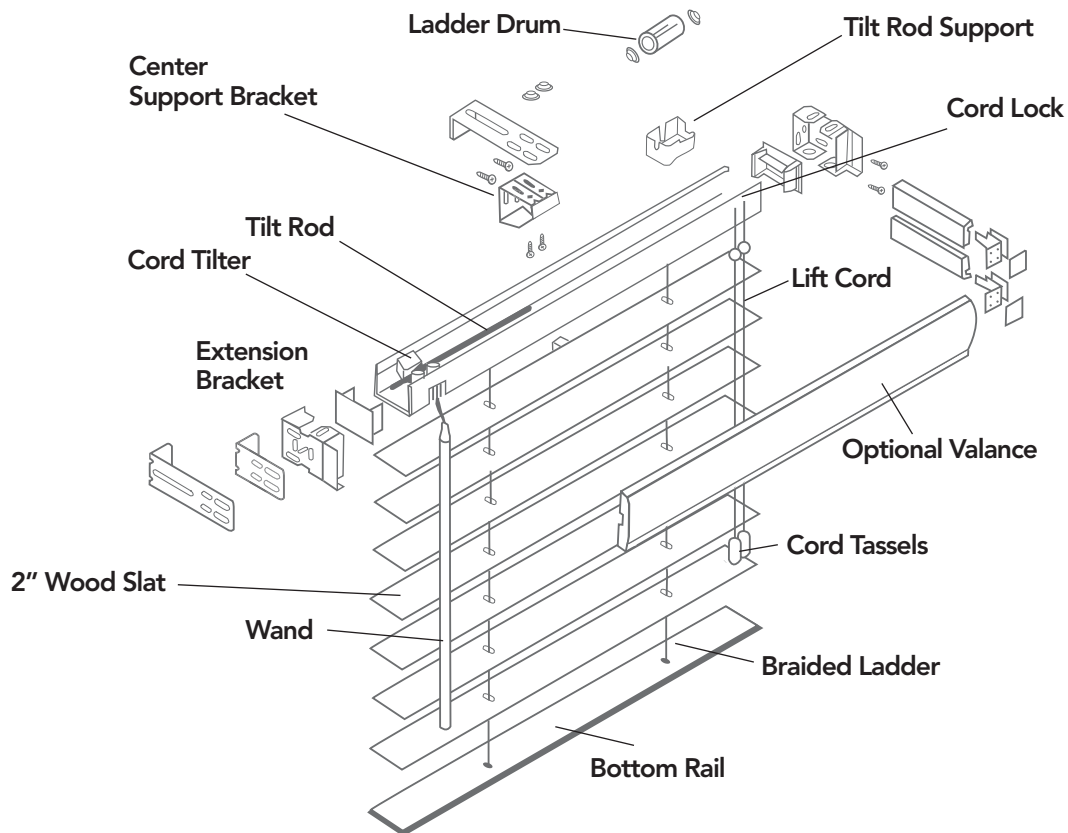
Actual colors may vary from images shown.



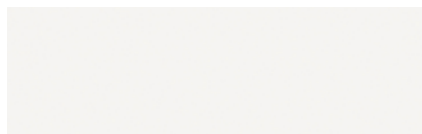
2" FR Faux Wood Blinds

- **Headrail:** 1 5/8" high x 2 1/4" wide x .022" thick U-shaped steel with 1/8" light blocking lip on the bottom center line. The steel finishing process includes phosphate treatment for corrosion resistance, a chrome-free sealer, a low HAP urethane primer and a topcoat with low HAP polyester baked enamel.
- **Cord Tilter:** A snap-in component incorporating a worm and pulley of low friction thermoplastic and nylon gear. The tilt cords are secured to the pulley and treated with tassels at the tilt end.
- **Tilt Rod:** electro-zinc coated solid steel measuring 1/4" square.
- **Cord Lock:** Made of metal in a snap-in design incorporating a floating, shaft-type locking pin. Its crash proof safety feature will lock blind automatically upon release of cord. The end of the lift cords are treated with tassels.

- **Drums:** High strength thermoplastic, which securely anchors the braided ladder.
- **Installation Brackets:** A rivet-hinged front cover phosphate-treated steel with urethane primer and polyester baked enamel finish to match the headrail.
- **Braided Ladder:** 100% polyester incorporating two extra strength rungs per ladder to support slats. Standard ladder spacing is 44mm.
- **Slats:** Rigid UV stabilized flat PVC nominally 2" wide x .10" thick with straight cut edges. Slats meet the requirement of NFPA 701 Test Method 1-2004 edition.
- **Bottomrail:** Extruded foam PVC 9/16" high x 2" wide and shall coordinate with slats.
- **Options include:**
 - NoHoles™ slat
 - Ring pull
 - Extension brackets
 - Hold down brackets
 - Cut outs



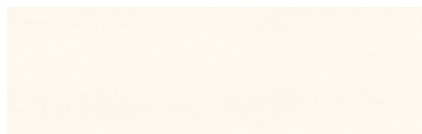
2" Lake Forest FR Faux Wood Blinds



5035 White



5951 Textured White



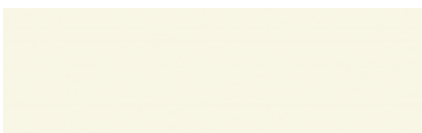
5742 Marshmallow



5630 Coconut



5299 Textured Coconut



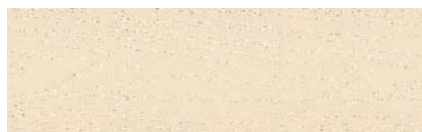
5058 Milky Way



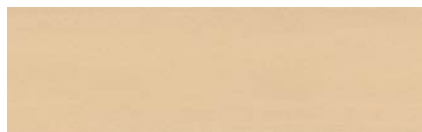
5304 Textured Milky Way



5078 Buttermilk



5953 Textured Buttermilk



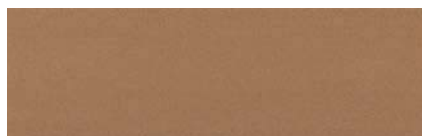
5724 Almond



5007 Natural



5955 Textured Natural



5687 Nutshell



5264 Nutmeg



5655 Cherry

Actual colors may vary from images shown.



2" Premium Lake Forest FR Faux Wood Blinds



2007 Natural



2710 Wheat



2465 Cognac



2012 Walnut



2316 Dark Cherry



2688 Peru



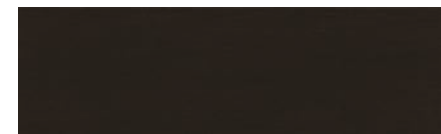
2013 Honey Maple



2030 Golden Oak



2694 Saddle Brown



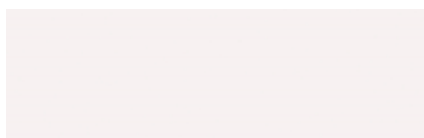
2716 Espresso

Actual colors may vary from images shown.



2" FR Composite Blinds

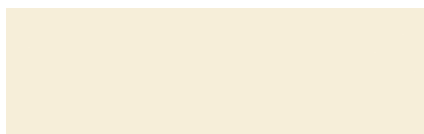
- **SureClose® Headrail:** 1 5/8" high x 2 1/4" wide x .022" thick U-shaped steel with 1/8" light blocking lip on the bottom center line. The steel finishing process includes phosphate treatment for corrosion resistance, a chrome-free sealer, a low HAP urethane primer and a topcoat with low HAP polyester baked enamel.
- **Cord Tilter:** A snap-in component incorporating a worm and pulley of low-friction thermoplastic and nylon gear. Tilt cords shall be secured to pulley and treated with tassels at tilt end. Cord tilter is standard.
- **Tilt Rod:** Electro-zinc coated solid steel measuring 1/4" square.
- **Cord Lock:** A snap-in design incorporating a floating, shaft-type locking pin and shall incorporate a crash proof safety feature that will lock blind automatically upon release of cord.
- **Drums:** High strength thermoplastic, which securely anchors braided ladder or cloth tapes.
- **Installation Brackets:** A rivet-hinged front cover phosphate-treated steel with urethane primer and polyester baked enamel finish to match headrail.
- **Braided Ladder:** 100% polyester incorporating two extra strength rungs per ladder to support slats. Standard ladder spacing is 44mm.
- **Slats:** A blend of PVC polymers 2" wide x 1/8" thick with straight cut edges. Slats meet the requirement of NFPA 701 Test Method 1-2004 edition.
- **Bottomrail:** A blend of PVC polymers 7/8" high x 2" wide in a trapezoid shape to improve closure and shall coordinate with slats.
- **Options include:**
 - NoHoles™ slat
 - Extension brackets
 - Cut outs
 - Ring pull
 - Hold down brackets



2603 Snowflake



2539 Arctic White



2055 Designer White



2692 Swiss Coffee



2787 Streaked Prairie



2026 Antique White



2715 Streaked Cream



2686 Streaked Sandstone

Actual colors may vary from images shown.



2" FR Nature Made™ Blinds

Nature Made™ Woods FR Blinds feature hardwood slats with the look of exotic wood species. The plantation-grown hardwood is treated to create a stained, bleached and/or dyed finish. Proprietary manufacturing processes allow the wood

blinds to pass the NFPA 701 small-scale flame retardant tests.

Nature Made™ FR blinds are an engineered wood veneer product that features standard cord tilt and lift for smooth operation and long-life performance.

Options Include:

de-Light™ feature ensures privacy and daylight control, placing route holes toward the back of the slat to prevent light leakage
Break-thru™ tassel and safety cord
Decorative cloth tapes

Single Blind

Width: 12" minimum, 75" maximum

Height: 12" minimum, 96" maximum

Two Blinds On One Headrail

Width: 24 1/4" minimum, 96" maximum

Height: 12" minimum, 96" maximum

2" FR Nature Made™ Blinds



Ebony



Natural Zebrawood



Black Zebrawood



Wenge

Tape Options



White



Camel



Black



Almond



Chestnut



Bordeaux

Actual colors may vary from images shown.